



# INDOFINE Chemical Company, Inc.

121 Stryker Lane, Bldg. 30, Suite 1 • Hillsborough, NJ 08844 • U.S.A.

Phone: (908) 359-6778 • FAX: (908) 359-1179

website: [www.indofinechemical.com](http://www.indofinechemical.com)

e-mail: [chemical@indofinechemical.com](mailto:chemical@indofinechemical.com)

## CERTIFICATE OF ANALYSIS

Catalog Number: B-003

Product Name: **7,8-BENZOFLAVONE**  
( $\alpha$ -Naphthoflavone)

Cas Number: [604-59-1]

Lot Number: 1509669

Chemical Formula: C<sub>19</sub>H<sub>12</sub>O<sub>2</sub>

Molecular Weight: 272.30

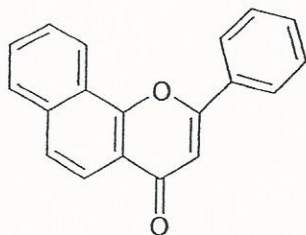
Melting Point: 156-158°C

Appearance: Off white powder

Solubility: Soluble in Methanol

Storage: Store in cool, dry place. Protect from light.

Purity (HPLC): 99.65%





# INDOFINE Chemical Company, Inc.

121 Stryker Lane, Bldg. 30, Suite 1 • Hillsborough, NJ 08844 • U.S.A.

Phone: (908) 359-6778 • FAX: (908) 359-1179

website: [www.indofinechemical.com](http://www.indofinechemical.com)

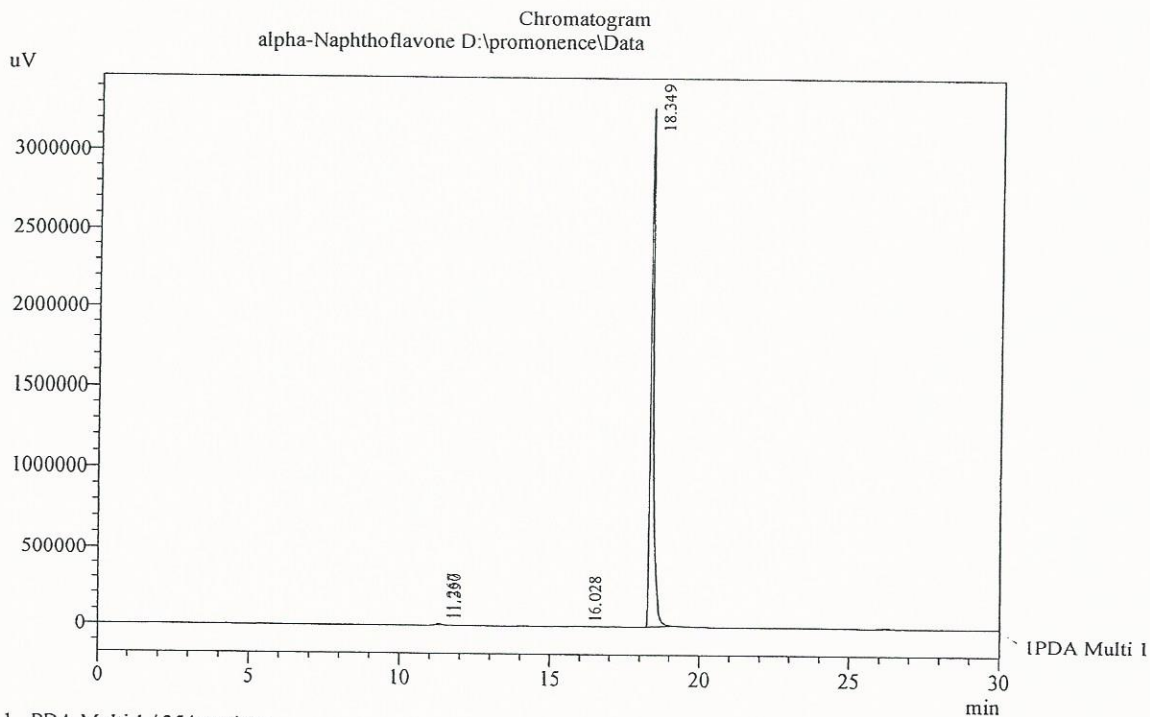
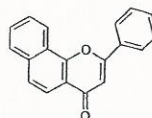
e-mail: [chemical@indofinechemical.com](mailto:chemical@indofinechemical.com)

## HPLC ANALYSIS

Acquired by : Admin  
Sample Name : alpha-Naphthoflavone  
Sample ID : BBML(Unit-II)  
Injection Volume : 20 uL  
Data Filename : 060515F.lcd  
Method Filename : Linear Gradient.M.lcm

Catalog No.: B-003  
Product Name: 7,8-Benzoflavone  
( $\alpha$ -Naphthoflavone)  
Lot No.: 1509669

Column : LUNA C-18, (250mm x4.6mm 5.0 $\mu$ )  
Flow : 1.000 mL/min.  
Mobile Phase : A(0.05% TFA in Water) B(Acetonitrile)  
0.01 90 10  
12.0 10 90  
20.0 10 90  
23.0 90 10  
30.0 90 10  
Diluent : Acetonitrile



1 PDA Multi 1 / 254nm 4nm

PeakTable

PDA Ch1 254nm 4nm

Peak#	Name	Ret. Time	Area	Area %	Relative Retention Time
1	RT:11.267	11.267	40343	0.17	1.00
2	RT:11.350	11.350	26704	0.11	1.01
3	RT:16.028	16.028	17123	0.07	1.42
4	Alpha-naphthoflavone	18.349	24038649	99.65	1.63
Total			24122819	100.00	